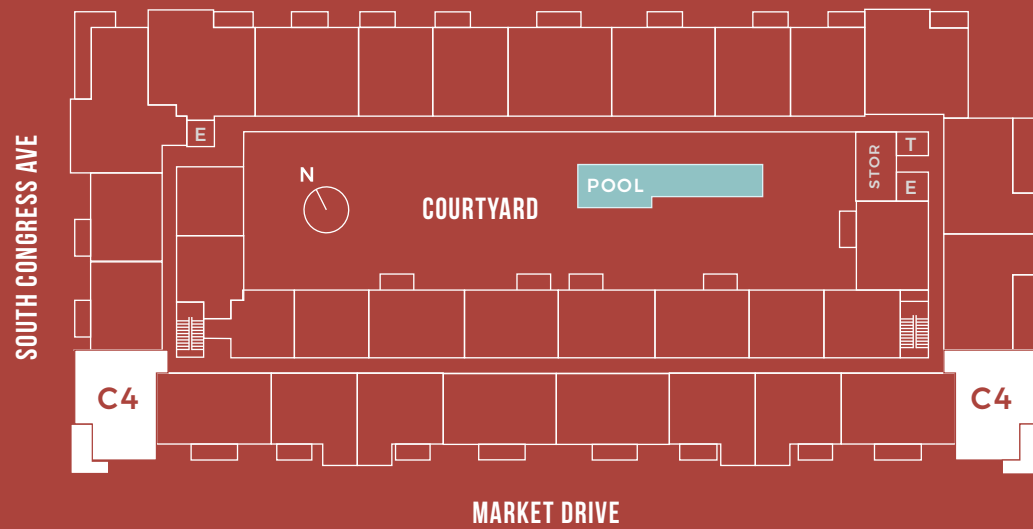


# CONGRESS AT LOFTS ST. ELMO

# C4


BED: 2  
BATH: 2

1,070-1,085 SF



CONGRESSLOFTS.COM • 512.489.7966

INTRACORP   
Building the Extraordinary

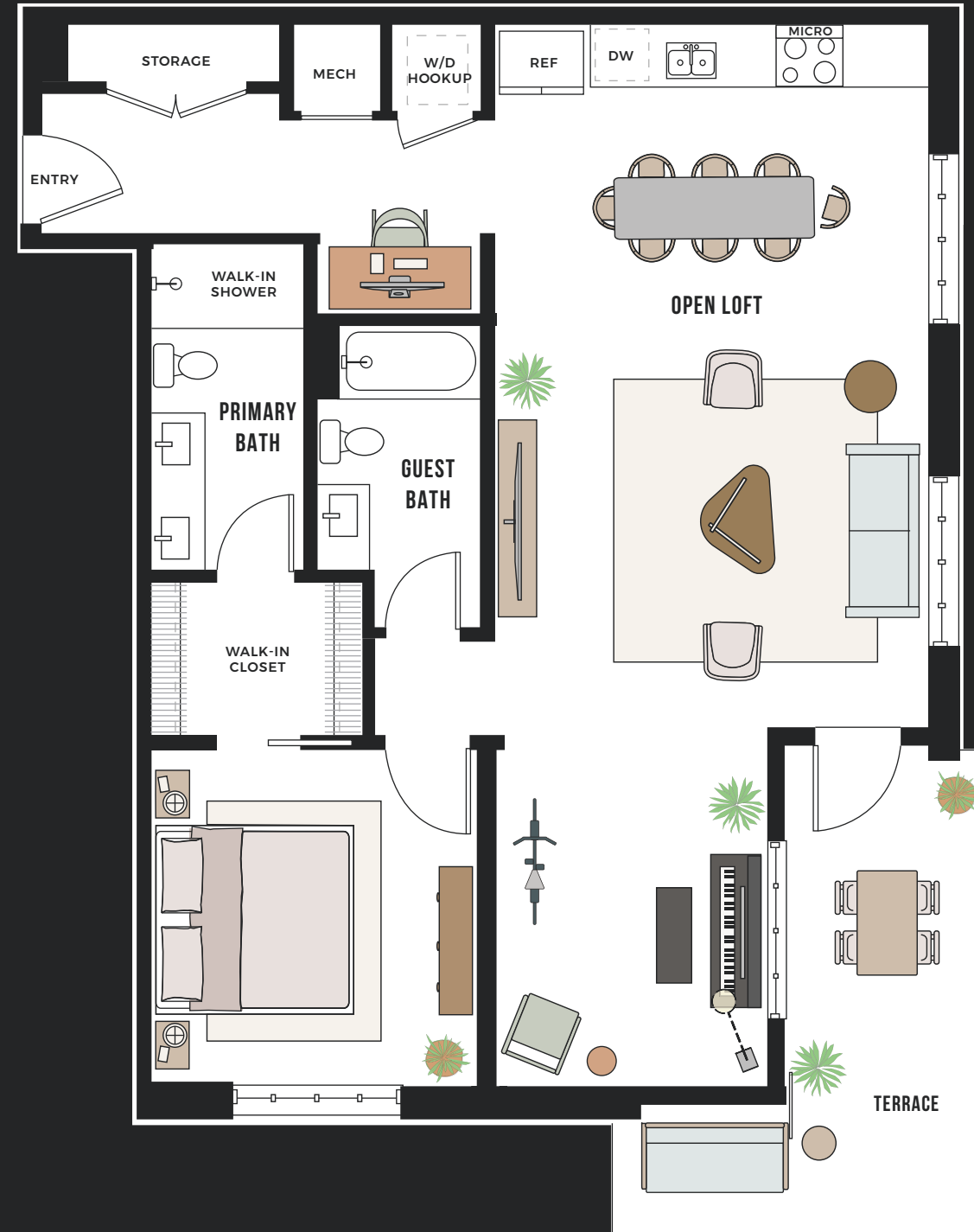
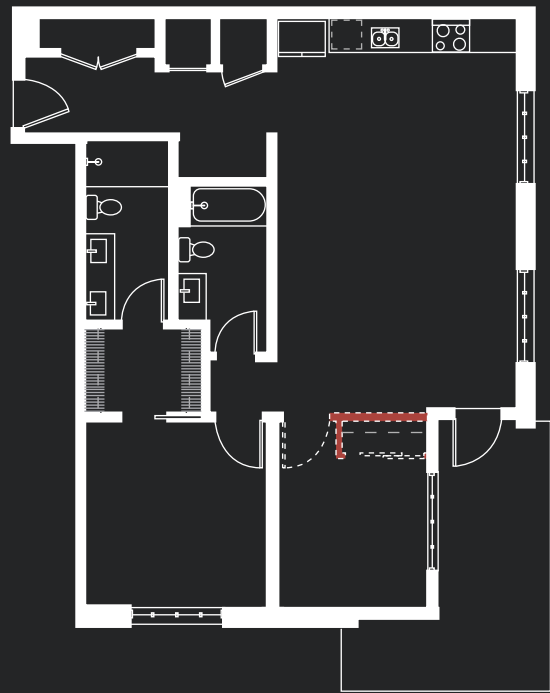
Floor plans are not to scale, dimensions are approximate, and may vary from the description of the unit in the condominium declaration and the purchase contract. Floor plans may be attached to the purchase contract as representative of the unit, but will not be construed as a description of the unit for conveyance or contract purposes. Floor plans, including room layouts and the configuration and location of appliances, cabinets, closets, plumbing facilities, and other improvements shown within the unit are subject to change. Please review the condominium declaration and purchase contract for a description of how the units are measured. You should review the actual materials prior to making any finish or upgrade selections. 

# CONGRESS AT LOFTS ST. ELMO

# C4

OPEN LOFT  
BATH: 2

1,070-1,085 SF



CONGRESSLOFTS.COM • 512.489.7966

INTRACORP  
Building the Extraordinary

Floor plans are not to scale, dimensions are approximate, and may vary from the description of the unit in the condominium declaration and the purchase contract. Floor plans may be attached to the purchase contract as representative of the unit, but will not be construed as a description of the unit for conveyance or contract purposes. Floor plans, including room layouts and the configuration and location of appliances, cabinets, closets, plumbing facilities, and other improvements shown within the unit are subject to change. Please review the condominium declaration and purchase contract for a description of how the units are measured. You should review the actual materials prior to making any finish or upgrade selections. 🏠